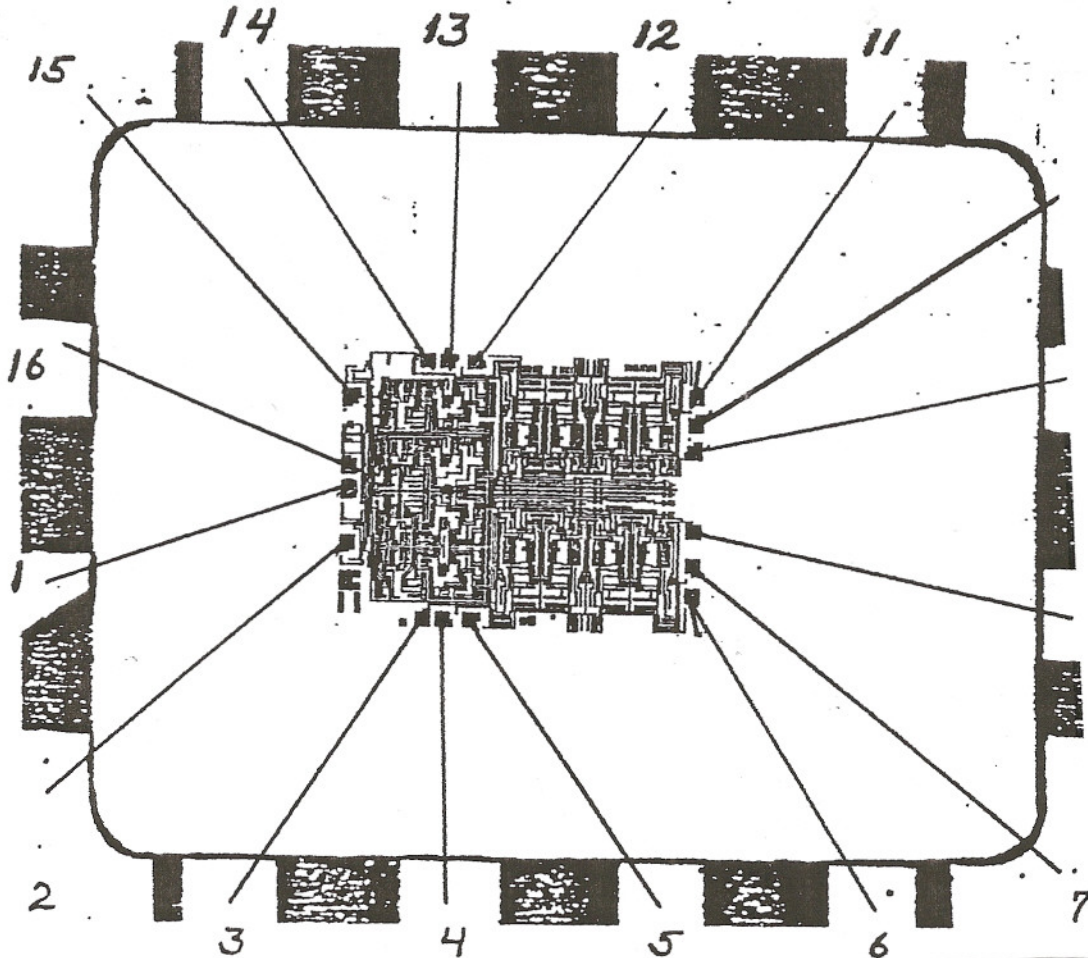




# Sierra Components, Inc.

2222 Park Place Building 3 Suite E • Minden, Nevada 89423  
Phone: 775.783.4940 Fax: 775.783.4947

Chip back potential is the level which bulk silicon is maintained by on-chip connection, or it is the level to which the chip back must be connected when specifically stated below. If no potential is given the chip back should be isolated.



**Topside Metal: Aluminum**  
**Backside Metal: Silicon**  
**Backside Potential:**  
**Bond Pad Size: .004" min.**  
**Mask Ref:**

**APPROVED BY: C Dawson**

**DIE SIZE : .110" X .140"**

**DATE: 11/11/05**

**MFG: Harris**

**THICKNESS: .015"**

**Part # HI0-509A**